

# PORTLAND POTTERY & METALSMITHING STUDIO

## SUMMER WORKSHOPS 2010

### Figure Sculpture w/ Jeff Bell



Wednesday July 21  
6-9:30pm

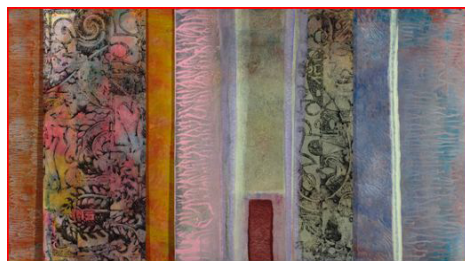
Working with a live model, students will be learning about realistic representation of the human form. Perspective, scale, size and gesture will be explored as students create several machetes out of clay. Jeff Bell is a teacher at Windham High School as well as a ceramic artist and sculptor.  
\$65-

### Laminated Tiles w/ George Mason

This workshop will focus on creating multi-level relief tile designs utilizing a laminated clay method that allows for intricacy, dimension, and speed of execution. There will be a demonstration of this method from start to finish, and an opportunity to try your hand at creating a design of your own.

George Mason has been working with relief tile murals for over three decades. He has taught in Indonesia, India, and Israel, as well as institutions in the United States such as The College of Ceramics at Alfred and Cranbrook Academy of Art. Mason has a passion for bas-relief because he feels that as a sculptural format it makes both elegant and dramatic use of light and shadow. \$60-

Saturday July 31, 1-5



### Paper Clay w/ Tacha Vosburgh



Saturday Aug. 14, 1-5pm

Did you know that paper clay is great for sculpting small, sharp, fine, details? Or that it can be added to a piece that is already bone dry? How about repairing cracks like never before? Did you know that it is really strong and has amazing green strength so that many interesting, new forms become possible? Artist Tacha Vosburgh has been using paper clay for many years. Her unique and wonderful lizard sculptures, are exquisitely detailed and the secret is in the clay. During this workshop, you will learn about this unique material, how it is made, and the many ways that it can be used.  
\$60-

# SUMMER CAMP!

weekly sessions  
through August

### RAKU WORKSHOPS

Saturday July 17th, 12-5

&

Saturday September 18th, 12-5



118 Washington Avenue • Portland, ME 04101  
207.772.4334 • [www.portlandpottery.com](http://www.portlandpottery.com)

